



**SWK - 2000/5**



**SWK - 2000/5U**

Separ 2000 series water separators fuel filters are a simple solution to many different fuel related problems. Five separate stages of filtration ensure 99.9% water separation at max flow. Low restriction reduces wear on fuel pumps and ensures full RPM's. Back flushable (cleanable) element reduces down time and costly element changes.

### Inlet / Outlet Connections

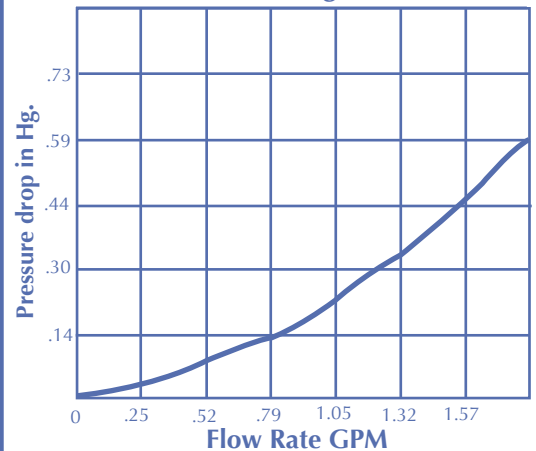
Single Unit: 3/4-16 Straight o-ring SAE

Duplex Unit: #8 Male JIC Flare (Optional Adapters Available)

### OPTIONS

- |                               |   |
|-------------------------------|---|
| M = Metal bowl                | K = Clear bowl with contacts for water level indication           |
| U = Switchable filter         | KD = Clear Bowl, heat shield, contacts for water level            |
| MK = Metal bowl with contacts | D = Clear bowl with heat shield (U.S.C.G. and R.I.N.A.. Approved) |
| G = Gauge                     |   |

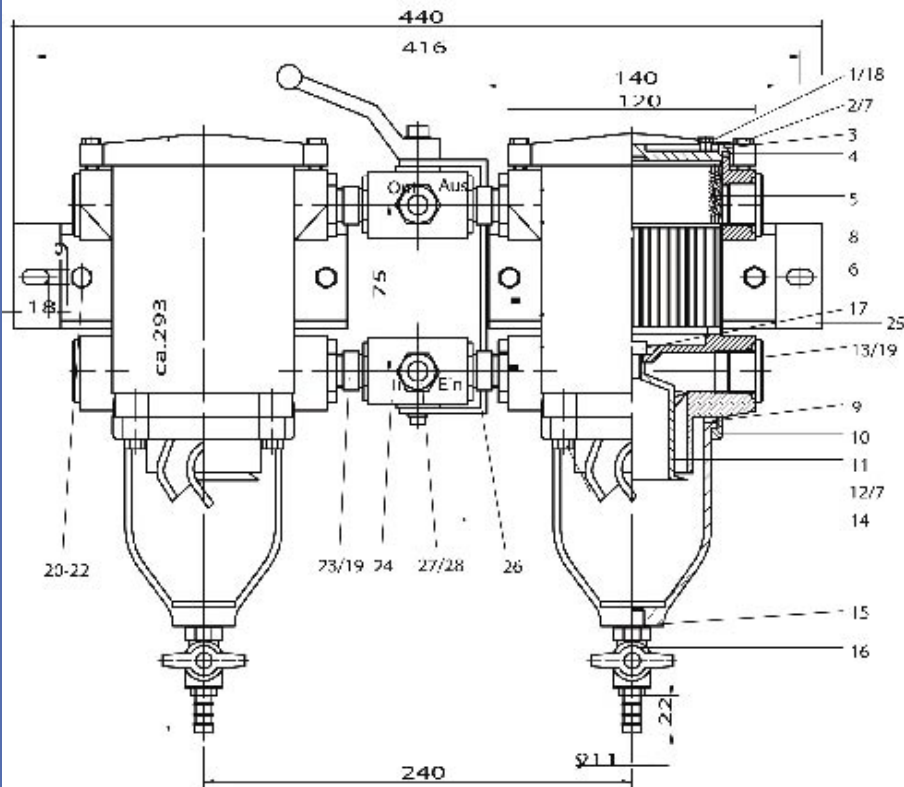
**Flow Diagram**



MAX Flow Rate 1.32 GPM

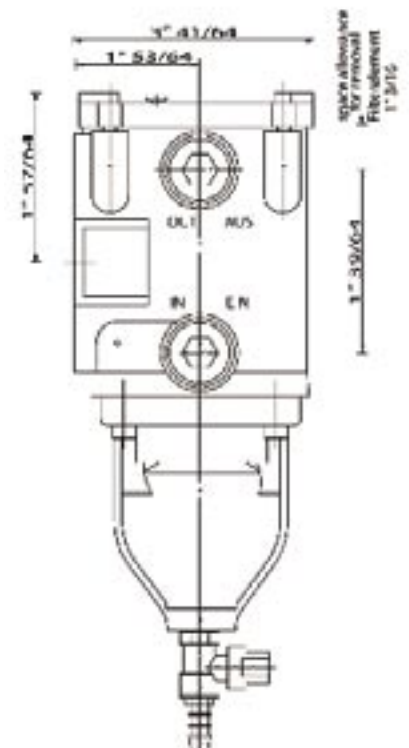
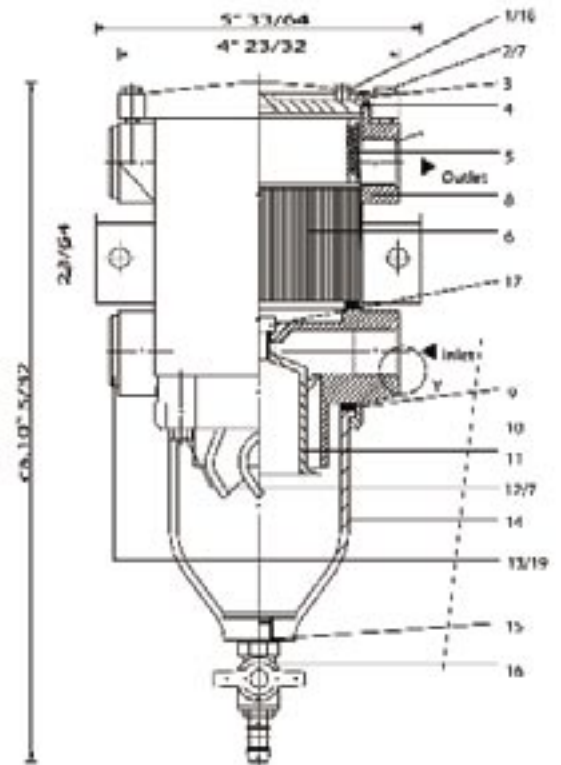
# SEPAR FILTER

## SWK- 2000/5D & 5UD



Inlet + Outlet Pipe Connection 12 mm

We reserve the right to alter the specification without prior notice



POS	Part #	Qty	Description	POS	Part #	Qty	Description
1	30408	1	Bleed Screw	16	30366	1	Drain Valve
2	FAB-518220	4	Lid Screw	17	30560	1	Certrifuge Screw
3	30542	1	Lid	18	30558	1	Bleed Screw Gasket
4	10367	1	Lid Gasket	19	6408-08	1	O-Ring for Plug (duplex)
5	30295	1	Spring Frame	20	30133	4	Mounting Bracket Screw
6	00530	1	Filter Element	21	30022	4	Mounting Bracket Lock Nut
7	30447	8	Washer	22	30021	4	Mounting Bracket Washer
8	30372	1	Housing	23	30473	4	Straight Fitting
9	10366	1	Bowl Gasket	24	30474	1	Reversing Valve
10	30564	1	Retainer Ring	25	30475	1	Mounting Bracket
11	30548	1	Certrifuge	26	30490	1	Reversing Lever
12	30561	4	Bowl Screw	27	30249	1	Union Nut
13	6408-08	2	Plug (single)	28	30250	1	Cutting Ring
14	30984	1	Clear Bowl		30652	1	Gauge
15	40002	1	Drain Valve O-Ring		9200-08-12	1	#8 Male JIC

# SEPAR FILTER

## SWK- 2000/5/50

**INDUSTRIAL SERIES**  
**Max. Flow Rate: 79 GPH - 300 LPH**



**SWK - 2000/5/50**



**SWK - 2000/5/50U**

Separ 2000 series water separators fuel filters are a simple solution to many different fuel related problems. Five separate stages of filtration ensure 99.9% water separation at max flow. Low restriction reduces wear on fuel pumps and ensures full RPM's. Back flushable (cleanable) element reduces down time and costly element changes.

### Inlet / Outlet Connections

Single Unit: 3/4-16 Straight o-ring SAE

Duplex Unit: #8 Male JIC Flare (Optional Adapters Available)

### OPTIONS

M = Metal bowl

K = Clear bowl with contacts for water level indication

U = Switchable filter

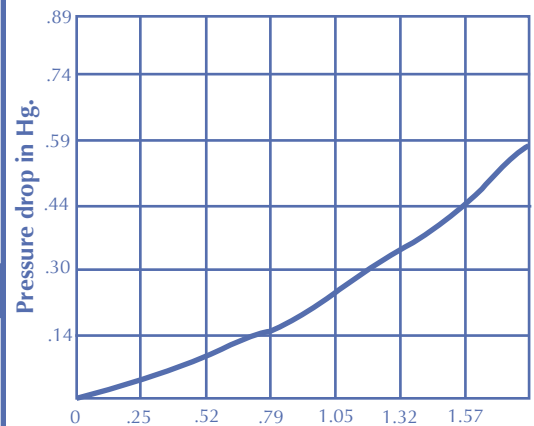
KD = Clear Bowl, heat shield, contacts for water level

MK = Metal bowl with contacts

D = Clear bowl with heat shield (U.S.C.G. and R.I.N.A.. Approved)

G = Gauge

**Flow Diagram**



**Flow Rate GPM**

**MAX Flow Rate 1.32 GPM**

SEPAR of the America's LLC  
 201 SW 20th Street,  
 Fort Lauderdale, FL 33315

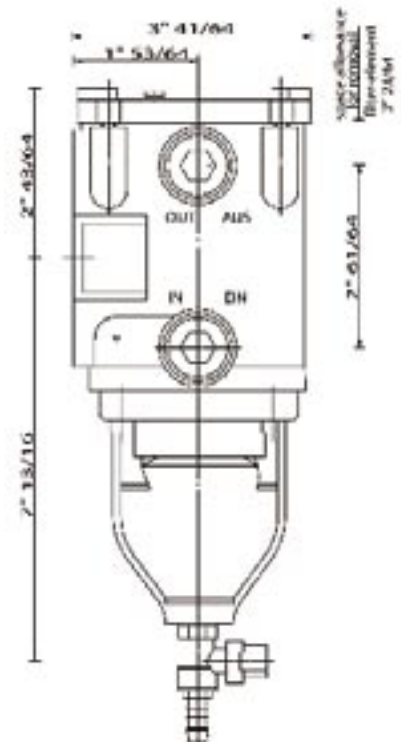
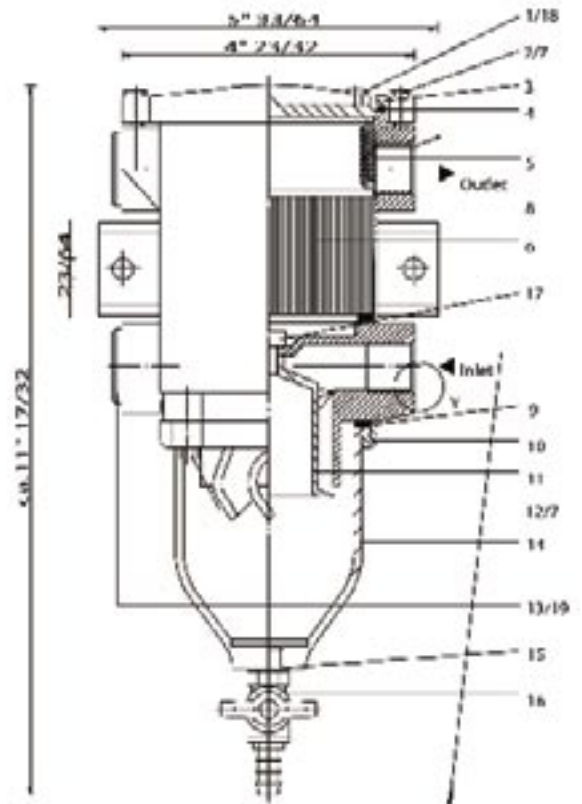
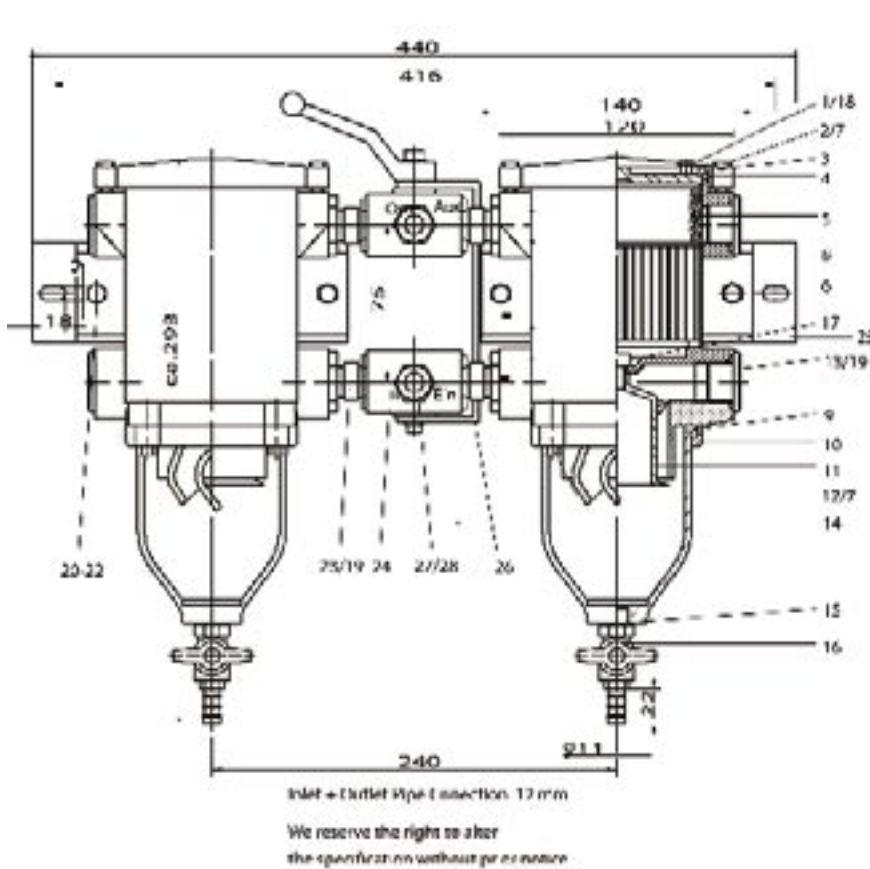
Phone: (954) 523 - 9396  
 Fax: (954) 522 - 0456

www.separfilter.com  
 info@separfilter.com

0701 9

# SEPAR FILTER

## SWK- 2000/5/50D & 5/50UD



POS	Part #	Qty	Description	POS	Part #	Qty	Description
1	30408	1	Bleed Screw	16	30366	1	Drain Valve
2	FAB-51821	4	Lid Screw	17	30560	1	Certrifuge Screw
3	30542	1	Lid	18	30558	1	Bleed Screw Gasket
4	10367	1	Lid Gasket	19	6408-08	1	O-Ring for Plug(duplex)
5	30295	1	Spring Frame	20	30133	4	Mounting Bracket Screw
6	00530/50	1	Filter Element	21	30022	4	Mounting Bracket Lock Nut
7	30447	8	Washer	22	30021	4	Mounting Bracket Washer
8	30380	1	Housing	23	30473	4	Straight Fitting
9	10366	1	Bowl Gasket	24	30474	1	Reversing Valve
10	30564	1	Retainer Ring	25	30475	1	Mounting Bracket
11	30548	1	Certrifuge	26	30490	1	Reversing Lever
12	30561	4	Bowl Screw	27	30249	1	Union Nut
13	6408-08	2	Plug (single)	28	30250	1	Cutting Ring
14	30984	1	Clear Bowl		30652	1	Gauge
15	40002	1	Drain Valve O-Ring		9200-08-12	1	#8 Male JIC

SEPAR of the America's LLC  
201 SW 20th Street,  
Fort Lauderdale, FL 33315

Phone: (954) 523 - 9396  
Fax: (954) 522 - 0456

www.separfilter.com  
info@separfilter.com  
0701 10

# SEPAR FILTER

## SWK- 2000/10

### INDUSTRIAL SERIES

Max. Flow Rate: 158 GPH - 600 LPH



**SWK - 2000/10**



**SWK - 2000/10U**

Separ 2000 series water separators fuel filters are a simple solution to many different fuel related problems. Five separate stages of filtration ensure 99.9% water separation at max flow. Low restriction reduces wear on fuel pumps and ensures full RPM's. Back flushable (cleanable) element reduces down time and costly element changes.

#### Inlet / Outlet Connections

Single Unit: 7/8-14 Straight o-ring SAE

Duplex Unit: #8 Male JIC Flare (Optional Adapters Available)

#### OPTIONS

M = Metal bowl

U = Switchable filter

MK = Metal bowl with contacts

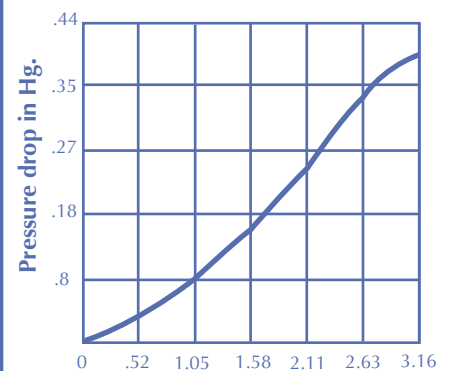
G = Gauge

K = Clear bowl with contacts for water level indication

KD = Clear Bowl, heat shield, contacts for water level

D = Clear bowl with heat shield (U.S.C.G. and R.I.N.A.. Approved)

#### Flow Diagram



Flow Rate GPM

MAX Flow Rate 2.63 GPM

SEPAR of the America's LLC  
201 SW 20th Street,  
Fort Lauderdale, FL 33315

Phone: (954) 523 - 9396

Fax: (954) 522 - 0456

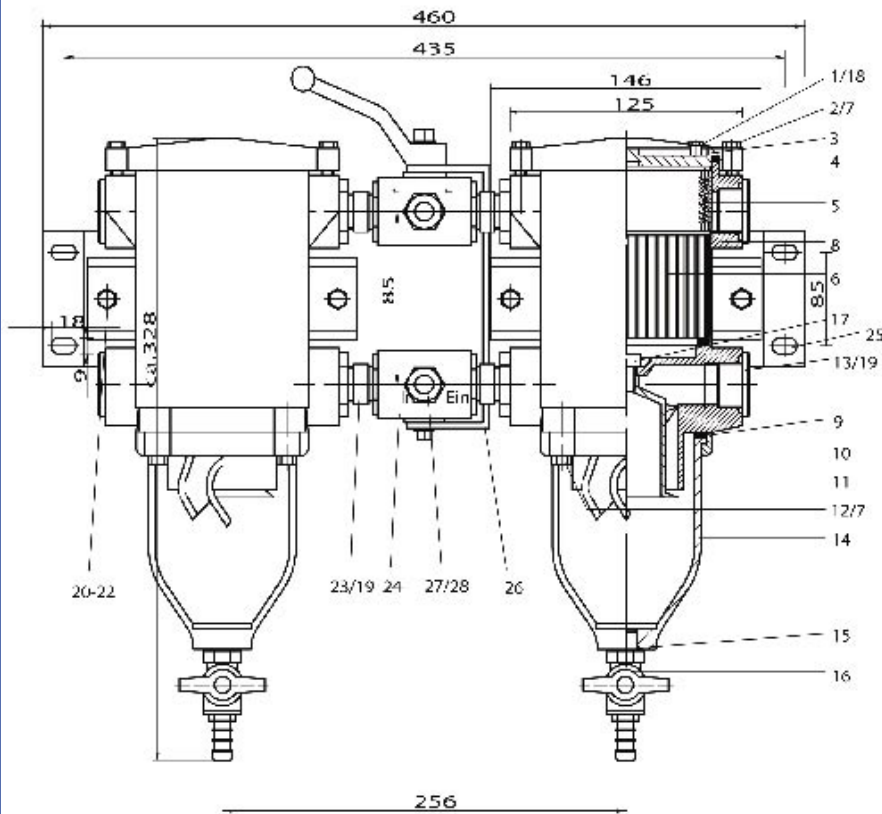
www.separfilter.com

info@separfilter.com

0701 11

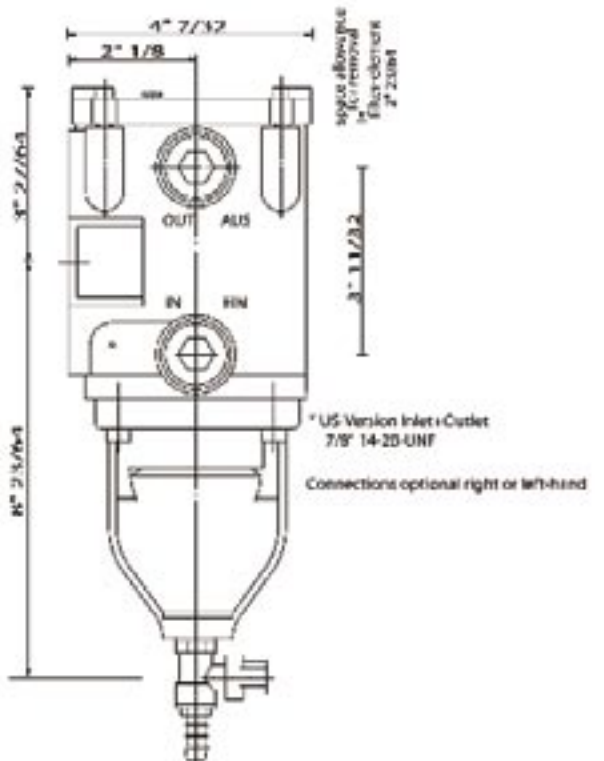
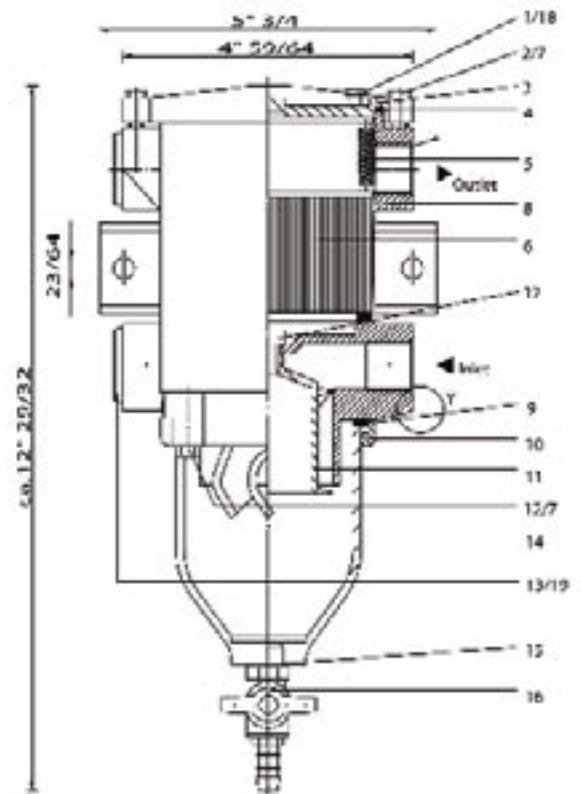
# SEPAR FILTER

## SWK- 2000/10D - 10UD



Inlet + Outlet Pipe Connection 15 mm

We reserve the right to alter the specification without prior notice!



POS	Part #	Qty	Description	POS	Part #	Qty	Description
1	30408	1	Bleed Screw	16	30366	1	Drain Valve
2	FAB-51822	4	Lid Screw	17	30560	1	Certrifuge Screw
3	30553	1	Lid	18	30558	1	Bleed Screw Gasket
4	10362	1	Lid Gasket	19	6408-10	4	O-Ring for Plug (duplex)
5	30297	1	Spring Frame	20	30133	4	Mounting Bracket Screw
6	01030	1	Filter Element	21	30022	4	Mounting Bracket Lock Nut
7	30448	8	Washer	22	30021	4	Mounting Bracket Washer
8	30552	1	Housing	23	30102	4	Straight Fitting
9	10361	1	Bowl Gasket	24	30476	1	Reversing Valve
10	30569	1	Retainer Ring	25	30477	1	Mounting Bracket
11	30563	1	Certrifuge	26	30491	1	Reversing Lever
12	30568	4	Bowl Screw	27	30247	2	Union Nut
13	6408-10	2	Plug (single)	28	30248	2	Cutting Ring
14	30985	1	Clear Bowl		30652	1	Gauge
15	40002	1	Drain Valve O-Ring		9200-08-15	1	#8 Male JIC

# SEPAR FILTER

## SWK- 2000/18

**INDUSTRIAL SERIES**  
**Max. Flow Rate: 285 GPH - 1080 LPH**



**SWK - 2000/18**



**SWK - 2000/18U**

Separ 2000 series water separators fuel filters are a simple solution to many different fuel related problems. Five separate stages of filtration ensure 99.9% water separation at max flow. Low restriction reduces wear on fuel pumps and ensures full RPM's. Back flushable (cleanable) element reduces down time and costly element changes.

### Inlet / Outlet Connections

**Single Unit:** 1 1/16-12 Straight o-ring SAE

**Duplex Unit:** #12 Male JIC Flare (Optional Adapters Available)

### OPTIONS

M = Metal bowl

U = Switchable filter

MK = Metal bowl with contacts

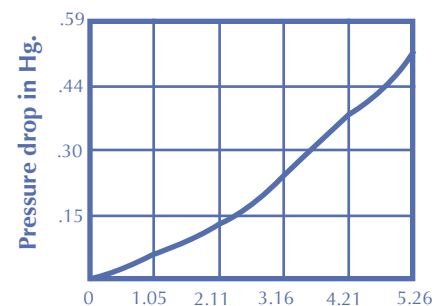
G = Gauge

K = Clear bowl with contacts for water level indication

KD = Clear Bowl, heat shield, contacts for water level

D = Clear bowl with heat shield (U.S.C.G. and R.I.N.A.. Approved)

### Flow Diagram



**Flow Rate GPM**  
**MAX Flow Rate 4.75 GPM**

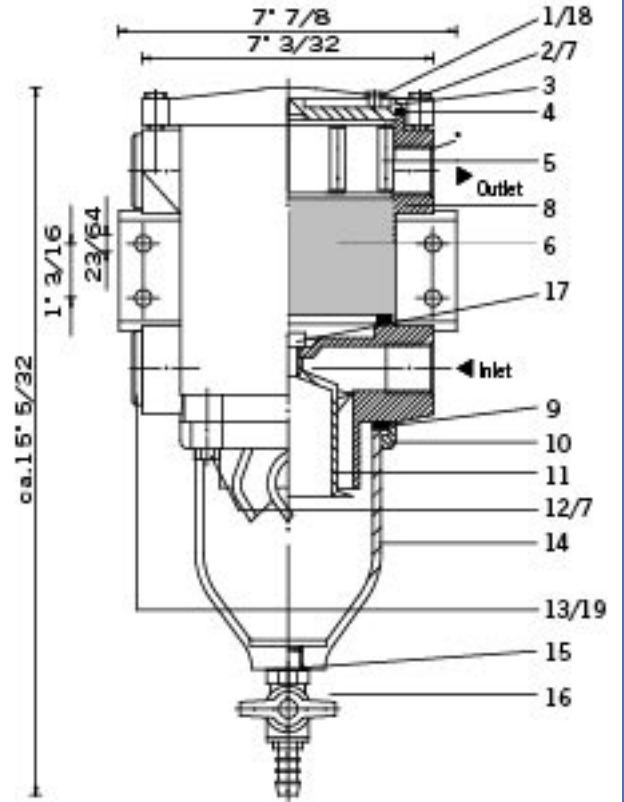
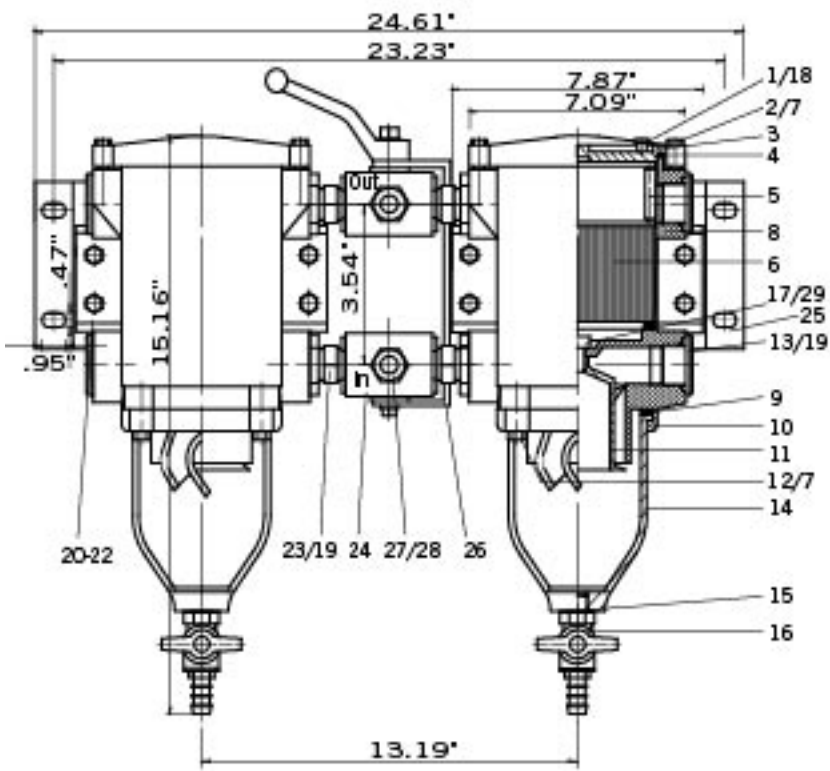
SEPAR of the America's LLC  
 201 SW 20th Street,  
 Fort Lauderdale, FL 33315

Phone: (954) 523 - 9396  
 Fax: (954) 522 - 0456

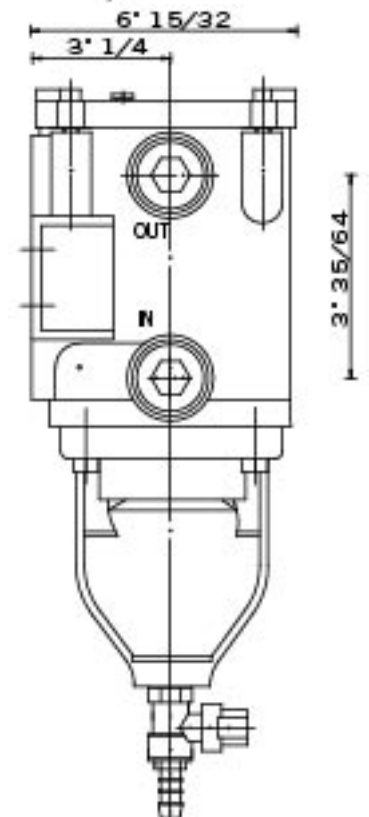
www.separfilter.com  
 info@separfilter.com  
 0701 13

# SEPAR FILTER

## SWK- 2000/18D - 18UD



Inlet and Outlet Pipe connection 22mm  
We reserve the right to alter the specification without prior notice.



POS	Part #	Qty	Description	POS	Part #	Qty	Description
1	30408	1	Bleed Screw	16	30343	1	Drain Valve
2	FAB-51823	4	Lid Screw	17	30560	1	Certrifuge Screw
3	30572	1	Lid	18	30558	1	Bleed Screw Gasket
4	30421	1	Lid Gasket	19	6408-12	4	O-Ring for Plug (duplex)
5	30298	1	Spring Frame	20	30488	4	Mounting Bracket Screw
6	01830	1	Filter Element	21	30022	4	Mounting Bracket Lock Nut
7	30448	8	Washer	22	30021	4	Mounting Bracket Washer
8	30428	1	Housing	23	30464	4	Straight Fitting
9	30423	1	Bowl Gasket	24	30465	1	Reversing Valve
10	30575	1	Retainer Ring	25	30466	1	Mounting Bracket
11	30429	1	Certrifuge	26	30492	1	Reversing Lever
12	30567	4	Bowl Screw	27	30338	2	Union Nut
13	6408-12	2	Plug (single)	28	30339	2	Cutting Ring
14	30986	1	Clear Bowl		30652	1	Gauge
15	30472	1	Drain Valve O-Ring		9200-12-22	1	#12 Male JIC



# SEPAR FILTER

## SWK- 2000/40M

**INDUSTRIAL SERIES**  
**Max. Flow Rate: 630 GPH -2400 LPH**



**SWK - 2000/40MK**



**SWK - 2000/40UM**

Separ 2000 series water separators fuel filters are a simple solution to many different fuel related problems. Five separate stages of filtration ensure 99.9% water separation at max flow. Low restriction reduces wear on fuel pumps and ensures full RPM's. Back flushable (cleanable) element reduces down time and costly element changes.

### Inlet / Outlet Connections

Single Unit: 1 5/16-12 Straight o-ring SAE

Duplex Unit: #20 Male JIC Flare (Optional Adapters Available)

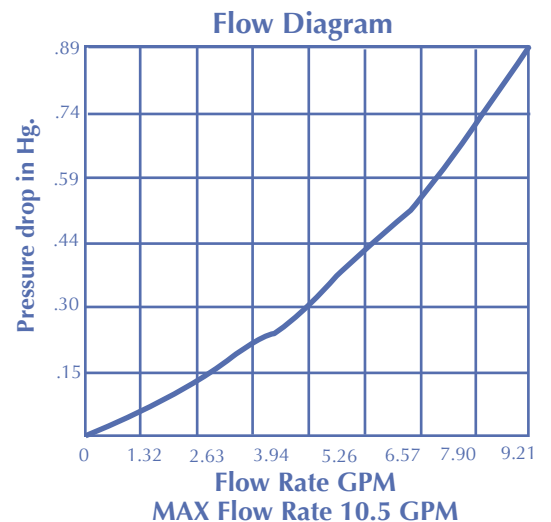
### OPTIONS

M = Metal Bowl

U = Switchable filter

MK = Metal bowl with contacts for water level

G = Gauge



SEPAR of the America's LLC  
 201 SW 20th Street,  
 Fort Lauderdale, FL 33315

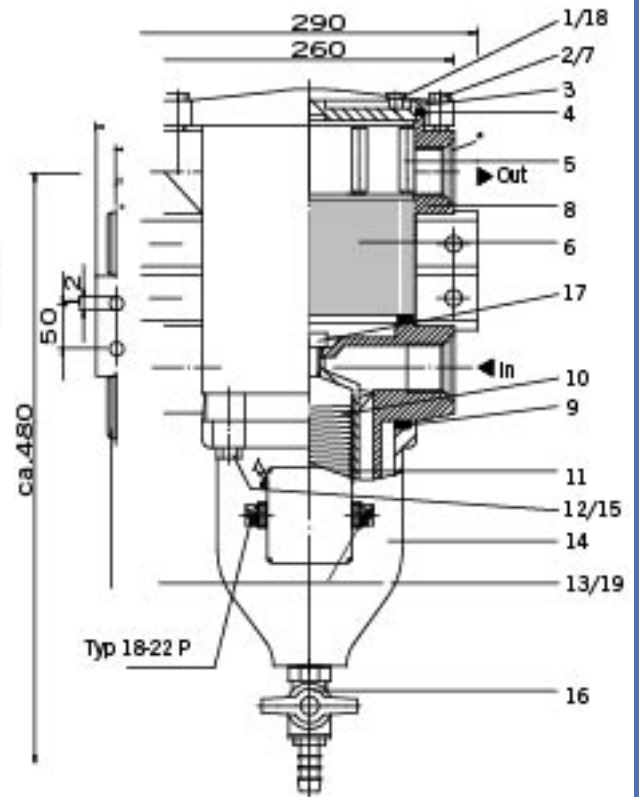
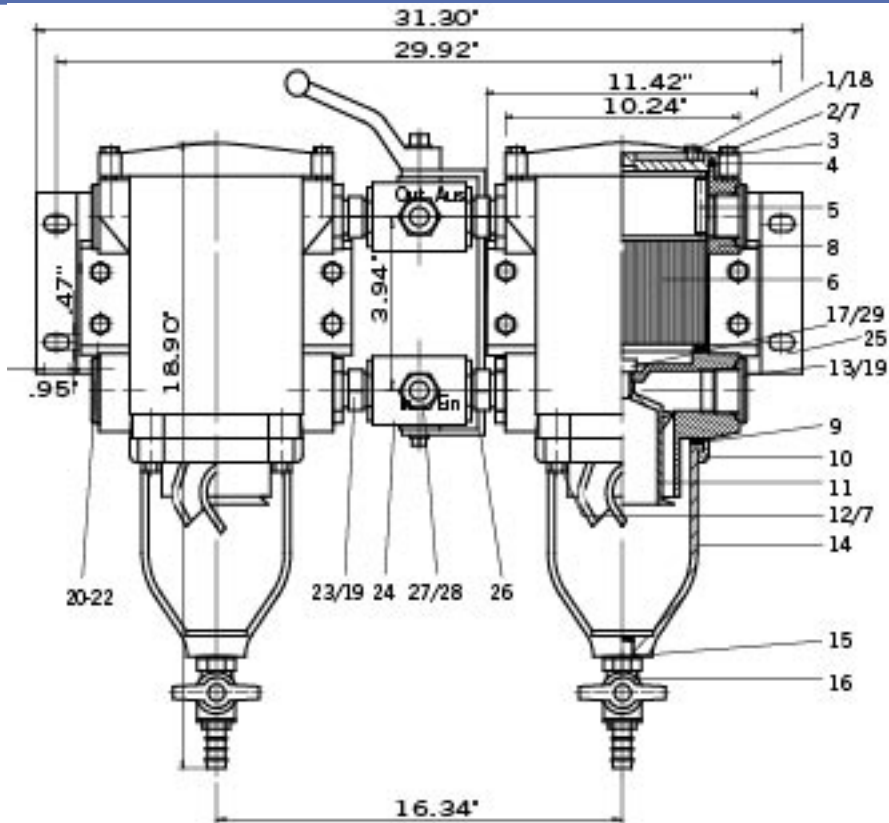
Phone: (954) 523 - 9396  
 Fax: (954) 522 - 0456

[www.separfilter.com](http://www.separfilter.com)  
[info@separfilter.com](mailto:info@separfilter.com)

0701 15

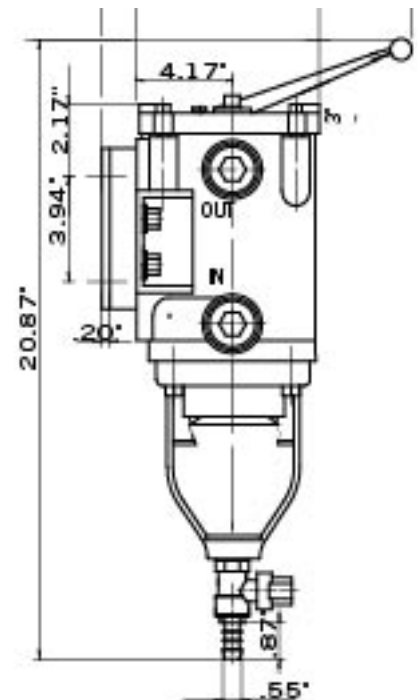
# SEPAR FILTER

## SWK- 2000/40M & 40UM



Inlet and Outlet Pipe connection 22mm  
We reserve the right to alter the specification without prior notice.

POS	Part #	Qty	Description	POS	Part #	Qty	Description
1	30408	1	Bleed Screw	19	6408-16	2	Plug O-Ring
2	30404	4	Lid Screw	20	30478	4	Mounting Bracket Screw
3	30435	1	Lid	21	30178	4	Mounting Bracket Lock Nut
4	30440	1	Lid Gasket	22	30104	8	Mounting Bracket Washer
5	30299	1	Spring Frame	23	30468	4	Straight Fitting
6	04030	1	Filter Element	24	30467	1	Reversing Valve
7	30021	8	Lid Screw Washer	25	30470	1	Mounting Bracket
8	10049	1	Right Side Housing	26	30493	1	Reversing Lever
9	30442	1	Bowl Gasket	27	30340	2	Union Nut
10	30446	1	Retainer Ring	28	30341	2	Cutting Ring
11	30438	1	Centrifuge	29	30395	4	Gasket
12	30567	4	Bowl Screw	30	30448	4	Bowl Screw Washer
13	6408-16	2	Plug	31	30402/11	1	Single Water Contact
14	30457	1	Metal Bowl	32	30403/11	1	Dual Water Contact
15	10048	1	Life Side Housing		30652	1	Gauge
16	30456	1	Drain Valve		9200-20-35	1	#20 Male JIC
17	30560	1	Centrifuge Screw		30544	1	Drain Valve O-Ring
18	30558	1	Bleed Valve Gasket				



# SEPAR FILTER

## SWK- 2000/130M

**INDUSTRIAL SERIES**  
**Max. Flow Rate: 2052 GPH - 7800 LPH**



**SWK - 2000/130MK**



**SWK - 2000/130UMK**

Separ 2000 series water separators fuel filters are a simple solution to many different fuel related problems. Five separate stages of filtration ensure 99.9% water separation at max flow. Low restriction reduces wear on fuel pumps and ensures full RPM's. Back flushable (cleanable) element reduces down time and costly element changes.

### Inlet / Outlet Connections

Single Unit: 2" NPT Pipe

Duplex Unit: 2" NPT Pipe

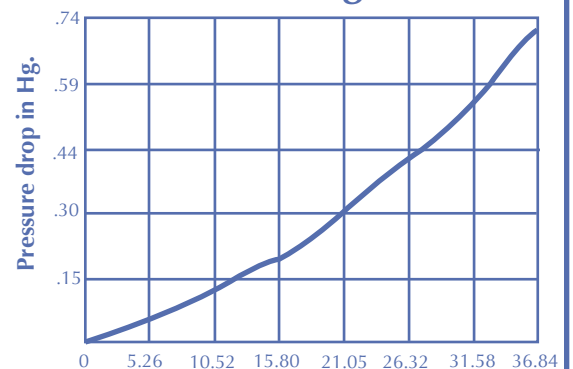
### OPTIONS

U = Switchable filter

MK = Metal bowl with contacts for water level

G = Gauge

### Flow Diagram



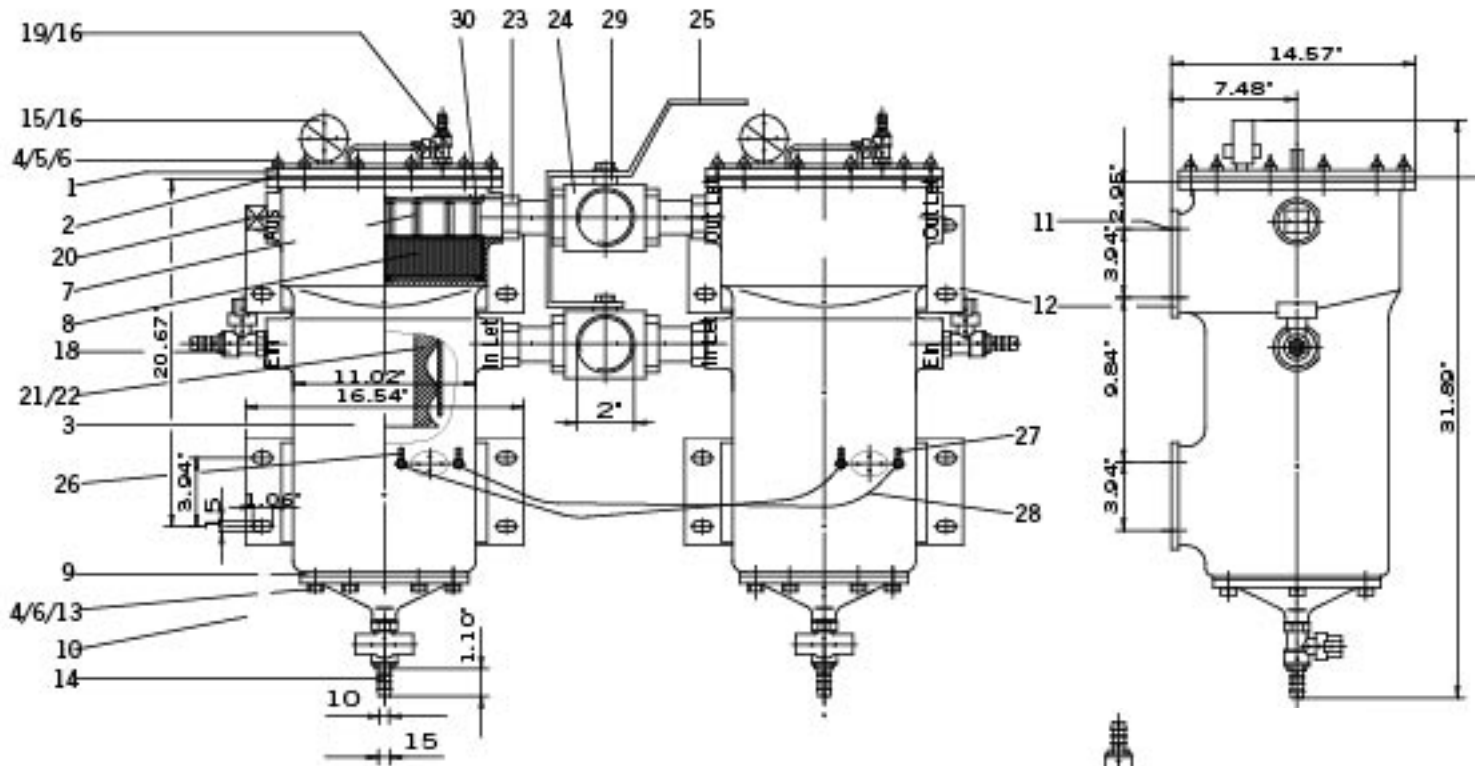
**Flow Rate GPM**  
**MAX Flow Rate 34.21 GPM**

SEPAR of the America's LLC  
 201 SW 20th Street,  
 Fort Lauderdale, FL 33315

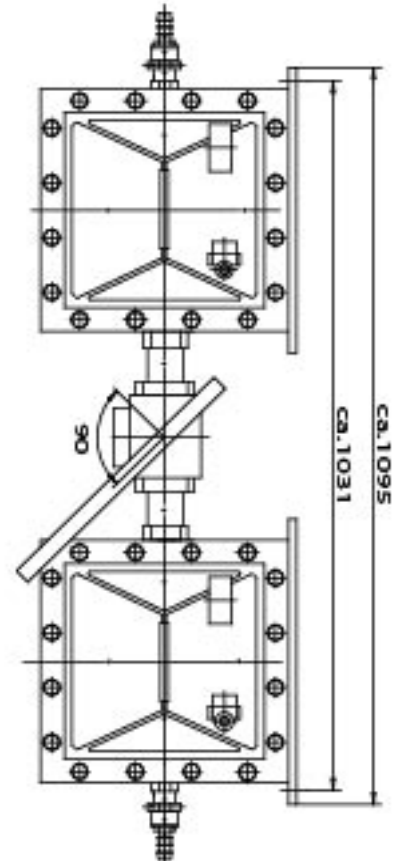
Phone: (954) 523 - 9396  
 Fax: (954) 522 - 0456

www.separfilter.com  
 info@separfilter.com

0701 17



POS	Part #	Qty	Description	POS	Part #	Qty	Description
1	10050	1	Lid	16	40002	2	Bleed Valve O-Ring
2	30387	1	Lid Gasket	17	10062	2	Reducing Bushing
3	10133	1	Housing	18	10074	1	Ball Valve
4	10072	22	Lid Screw	19	30366	1	Bleed Valve
5	10073	16	Cap Nut	20	10053	2	Plug
6	30021	32	Screw Washer	21	10056	1	Centrifuge
7	30298	4	Spring Frame	22	10057	1	Centrifuge Screw
8	01830	4	Filter Element	23	10058	2	Fitting
9	10136	1	Gasket Bowl	24	10043	1	Reversing Valve
10	10138	1	Bowl	25	10059	1	Reversing Lever
11	10138	16	Mounting Bracket Screw	26	30402/11	1	Water Contact(Single)
12	10129	2	Mounting Plate	27	30403/11	1	Water Contact (Dual)
13	10137	6	Bowl Screw	28	10078	1	Connection Wire
14	30456	1	Drain Valve	29	10081	1	Elbow
15	30652	1	Vacuum Gauge	30	10022	1	Pressure Frame

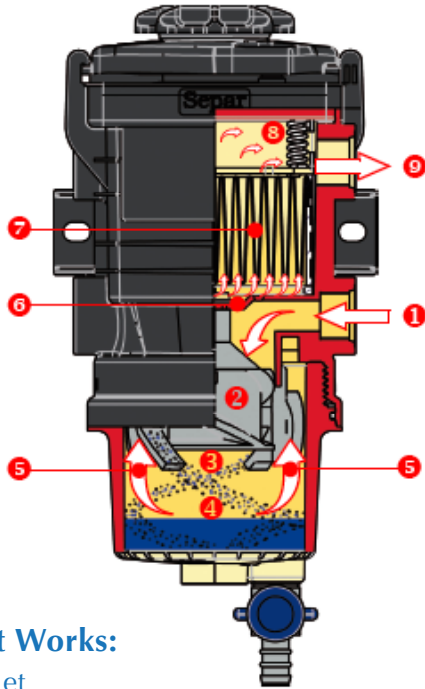


# SEPAR FILTER

## EVO-10 Diesel Fuel Filter

Water Separator/ Primary Filter  
Max. Flow Rate: 158 GPH - 600 LPH

- High separation efficiency with minimal pressure drop
- Easy to install
- Service and environment friendly
- Optional heater and/or water sensor
- Compact design with minimal weight



### How it Works:

- 1 Fuel inlet
- 2 Rotational motion is induced in the fuel, while passing through the internal vanes
- 3 The fuel exits the internal vane system and enters the filter bowl
- 4 Due to the rotational energy, water and particulates separate from the fuel and settle at the bottom of the bowl
- 5 The fuel is guided to the filter prechamber
- 6 The large cross section of the pre-chamber results in the fuel flow velocity being reduced allowing more particulate separation
- 7 Suspended particulates and the finest water droplets are caught in the pleated media of the filter element
- 8 The cleaned fuel passes to the outlet chamber
- 9 Fuel outlet

### Inlet/Outlet Connections

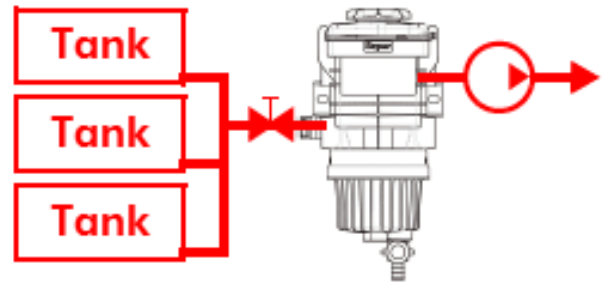
Single Unit: 22 x 1.5 mm internal thread size

### Ideal for:

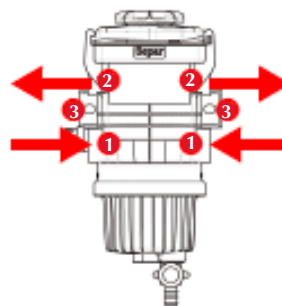
- Construction
- Transportation
- Off-Road Machinery
- Agricultural Applications



### Installation



The filter has to be installed in the suction line (in between the tank and the fuel lift-pump), however it does not matter whether the filter inlet is positioned above, level with, or below the maximum fuel level in the tank for the filter to function correctly. As a safety precaution we suggest installing a shut-off ball valve with full flow diameter between the fuel tank and the filter.

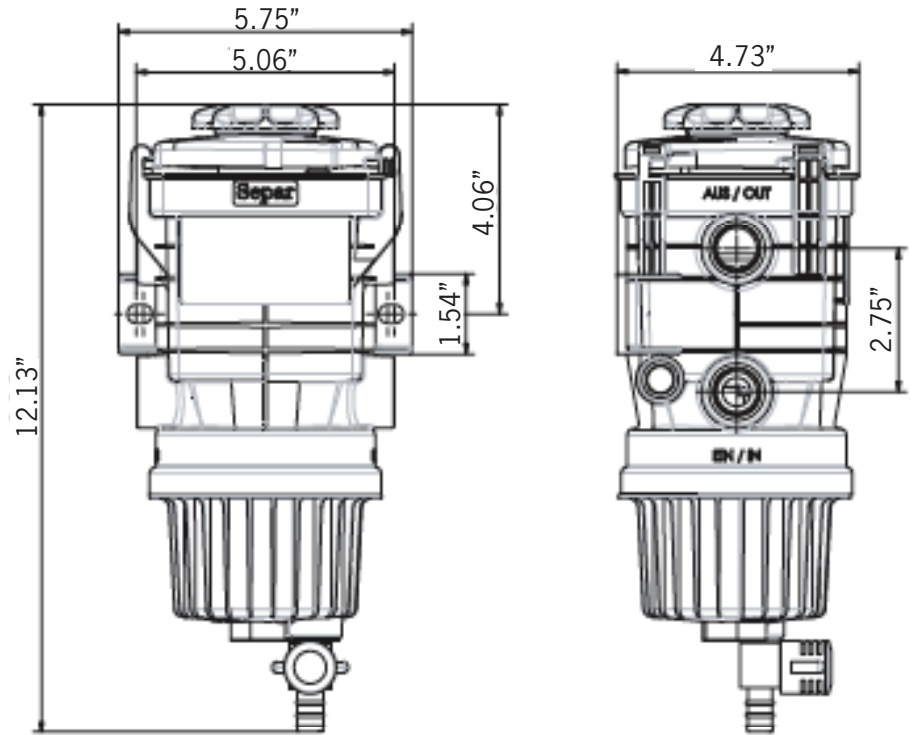
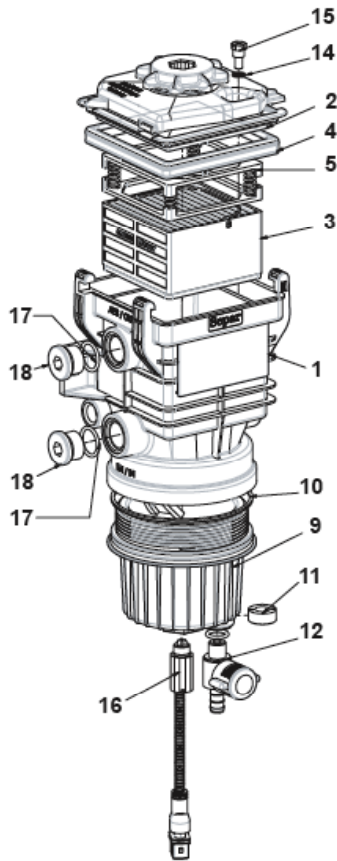


The filter should be attached to the mounting surface with suitable screws through the mounting brackets 3. The inlets 1 and outlets 2 allow the fuel lines to be connected on the left and/or right side according to your requirements. The torque for the connection of fittings to the filter is 20 Nm or 175 in-lbs.

# SEPAR FILTER

## EVO-10 Diesel Fuel Filter

Water Separator/ Primary Filter  
Max. Flow Rate: 158 GPH - 600 LPH



Drawing dimensions in INCHES for reference only. Technical drawings available upon request.

### Element Replacement

Item	Description	Step 1	Step 2	Step 3	Step 4
1	filter housing	<p><b>Step 1</b> Loosen the central tightening screw on the cover. Turn it until it reaches the stop position.</p> 	<p><b>Step 2</b> Release the lid with a gentle pressure and rotate it left so that it is free of the bayonet.</p> 	<p><b>Step 3</b> Remove the spring cassette. Pull the filter element out of the housing using the handle.</p> 	<p><b>Step 4</b> Dispose of the used filter element responsibly (according to local regulations).</p> 
2	filter lid				
3	filter element				
4	lid gasket				
5	spring cassette	<p><b>Step 5</b> Insert the new filter element.</p> 	<p><b>Step 6</b> Replace the spring cassette.</p> 	<p><b>Step 7</b> Reset the cover with a gentle downward pressure and a turn to the right. Check the correct location of the lid on the filter head.</p> 	<p><b>Step 8</b> Tighten the screw to a torque of 10 Nm or 88 in-lbs. Prime the fuel system.</p> 
9	water sensor bowl				
10	bowl gasket, o-ring				
11	twin hole nut				
12	drain valve				
14	seal washer (USIT)				
15	bleed valve				
16	water in fuel sensor				
17	O-ring				
18	blind screw (plug)				

SEPAR of the America's LLC  
201 SW 20th Street,  
Fort Lauderdale, FL 33315

Phone: (954) 523 - 9396  
Fax: (954) 522 - 0456

www.separfilter.com  
info@separfilter.com  
0708 20